

CLARITY HOMES

— clarityhomes.com —



TIMBER CREEK ESTATES

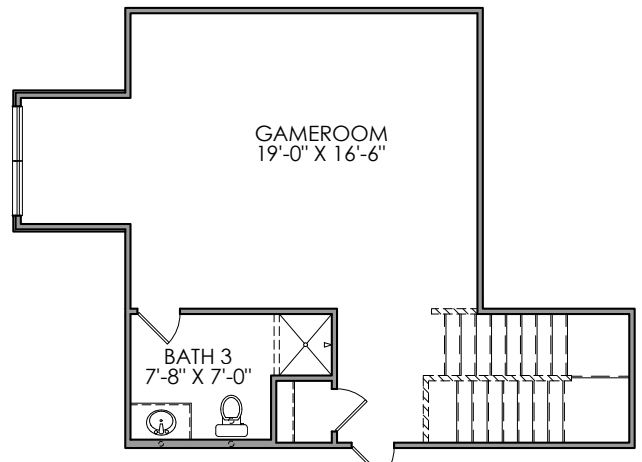
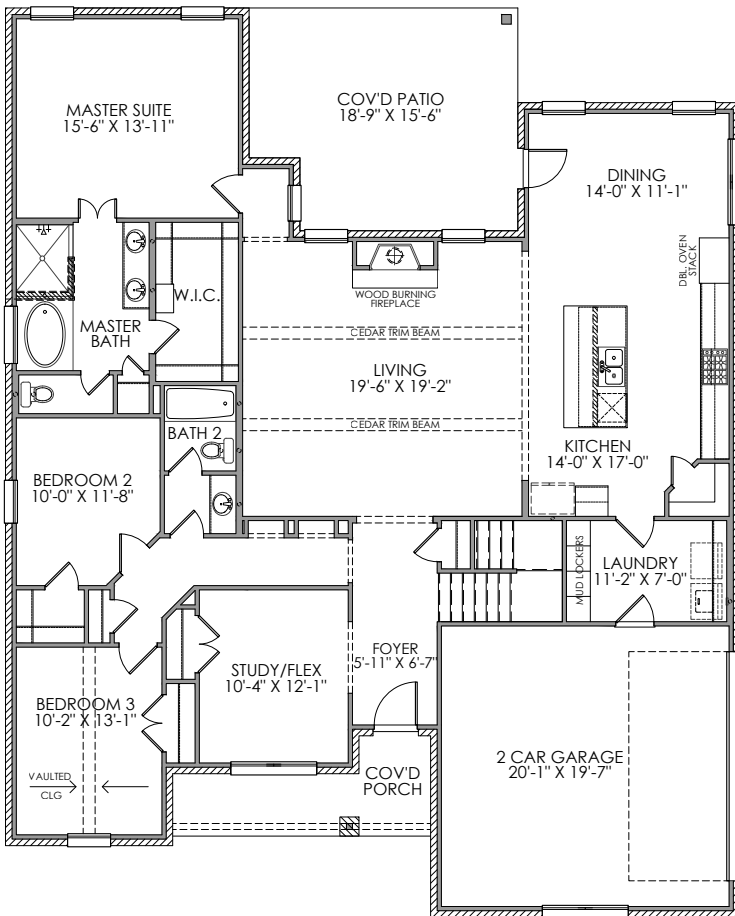
3 BED | 3 BATH | FLEX | GAME ROOM | 2 CAR

2,680 Sq. Ft.

- Stunning Timber Creek Estates model home is officially for sale!
- Sits on just over a half acre with a spacious extended covered patio and extended driveway
- Luxury vinyl wood-style flooring in entry, living, kitchen, dining, flex room, laundry room, and halls
- Chef's dream kitchen with an expansive quartz eat-in island
- Stainless appliances including: double wall ovens & 36" cooktop
- Wood burning fireplace with floor-to-ceiling stone surround
- 10' ceilings with stained cedar beams in living room
- Laundry room with mud lockers
- Signature painted brick archway
- Built-in shelving in hall to bedrooms
- Shiplap accent walls in dining space + master bedroom
- Vaulted ceiling at Bed 3
- Designer lighting and tile throughout!
- Full landscaping package with irrigation and more!

115 SADDLE RIDGE DRIVE
GODLEY, TX 76044

This light & bright, refined farmhouse Model Home is loaded with upgrades and designer features throughout!



CONTACT: RYAN STALCUP

Ryan@ClarityHomes.com

817-975-2884

CLARITY HOMES

3605 El Campo Ave. Fort Worth, Texas 76107

817-569-8448

www.ClarityHomes.com

Elevations are artist's conception and room sizes are approximate, consult blueprints for specific detail. Square footages may vary. In order to facilitate continued improvement, Clarity Homes reserves the right of price, plan or specification changes without notice or obligation. Promotional materials in models or similar homes that have been viewed may have extra features, plan changes or improvements shown therein which may not be included unless specifically provided for the purchase agreement. Prices may vary between different elevations for the same floor plan. Prices subject to change without notice.