

# CLARITY HOMES®

— clarityhomes.com —

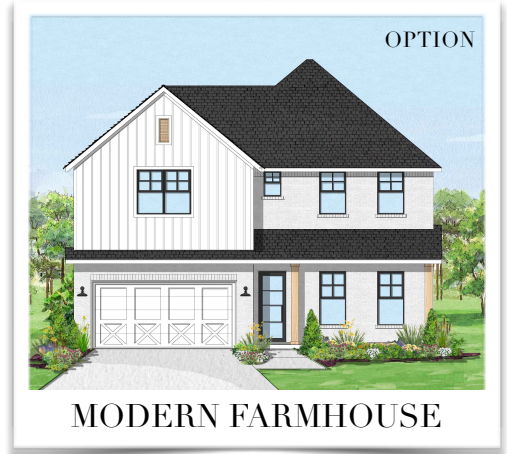


FRENCH



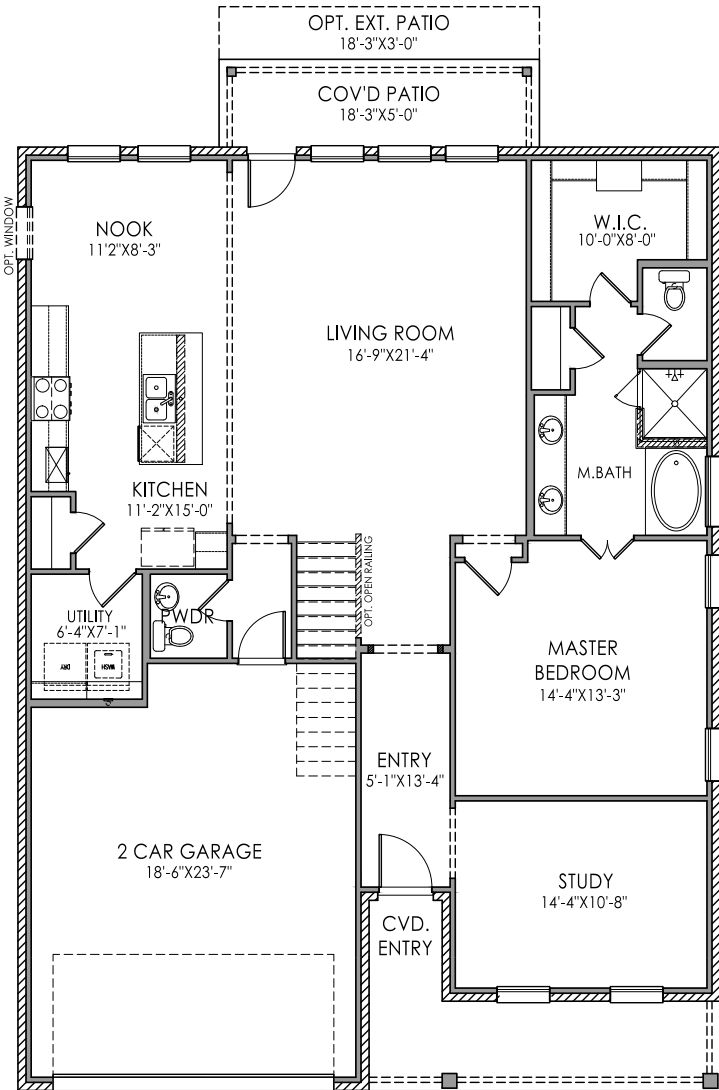
OPTION

CRAFTSMAN



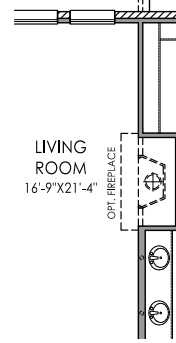
OPTION

MODERN FARMHOUSE



1ST FLOOR

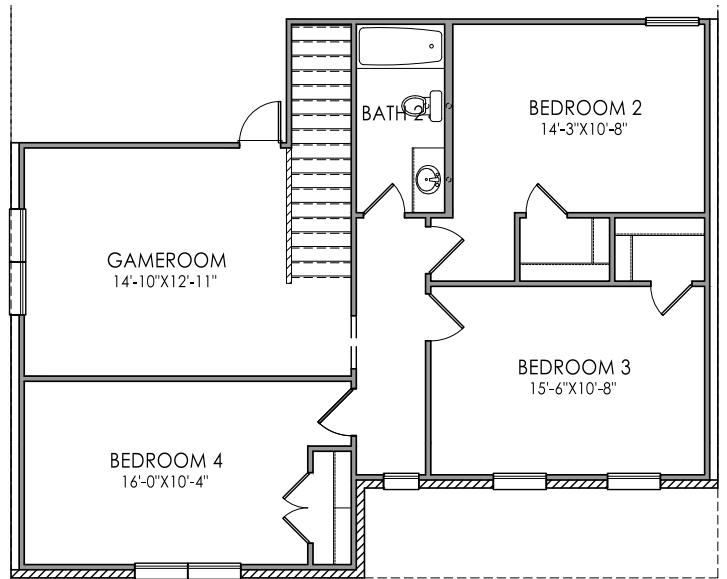
CRAFTSMAN & FARMHOUSE  
PORCH CONFIGURATION



OPTIONAL FIREPLACE  
(in lieu of linen closet  
in master bath)

## KENLEY

**PLAN SIZE:**  
40' W x 58'9" D  
**2,600 SQ.FT.**



2ND FLOOR

CLARITY HOMES

3605 El Campo Ave. Fort Worth, Texas 76107

817-569-8448

www.ClarityHomes.com

Photos vary and are not intended to be an exact representation and elevations are artist's conception. Room sizes are approximate, consult blueprints for specific detail. Square footages may vary. In order to facilitate continued improvement, Clarity Homes reserves the right of price, plan or specification changes without notice or obligation. Promotional materials in models or similar homes that have been viewed may have extra features, plan changes or improvements shown therein which may not be included unless specifically provided for the purchase agreement. Prices may vary between different elevations for the same floor plan. Prices subject to change without notice.