

# CLARITY HOMES

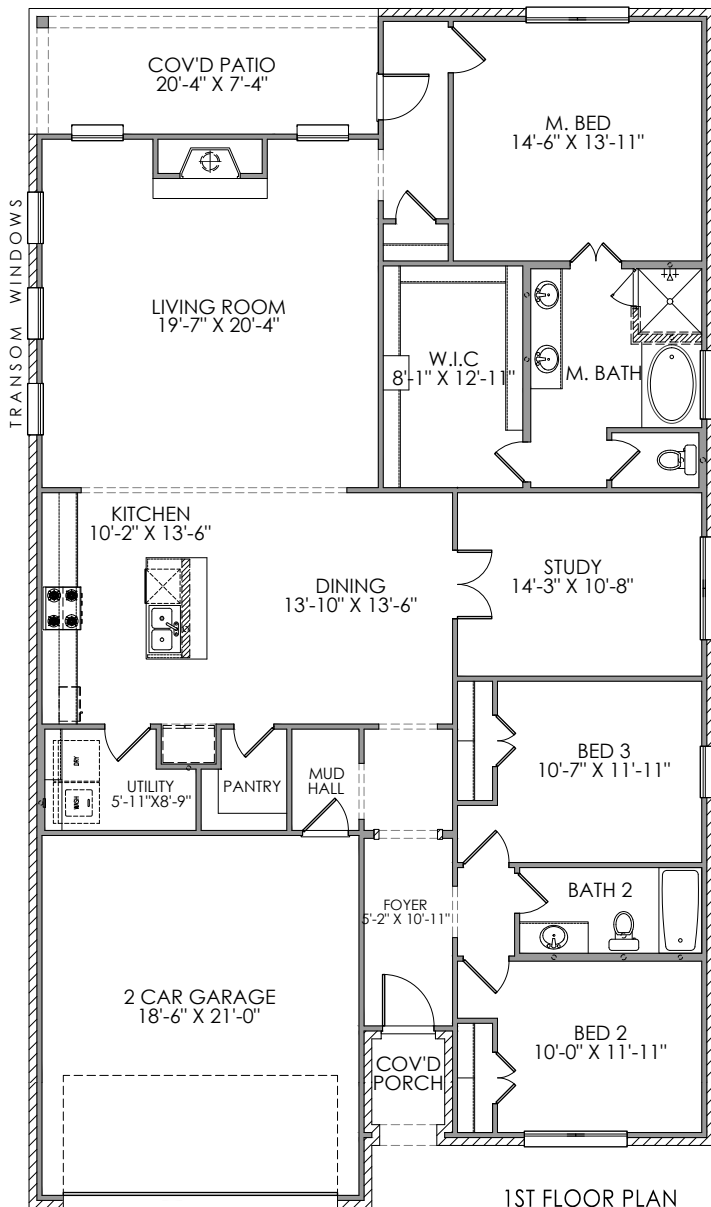
clarityhomes.com

## CROWN VALLEY ESTATES

3 BED | 2 BATH | FLEX ROOM

MUD ROOM | 2 CAR GARAGE

2,124 Sq. Ft.



1009 BROWN VALLEY TRAIL  
WEATHERFORD, TX 76087

- New Cottage coming to Crown Valley Estates!
- Luxury vinyl wood-style flooring in entry, living, kitchen, dining, flex room, mudroom, and halls
- Chef's dream kitchen with an expansive eat-in island
- Stainless kitchen appliances + gas range
- Cozy gas fireplace
- Signature brick archway at entry
- Spacious master bathroom with large soaker tub and separate shower
- Designer lighting and tiles throughout
- Full landscaping package with irrigation and more!

**CONTACT: DAYNA THOMPSON**

817-692-1445

Dayna@ClarityHomes.com

CLARITY HOMES

3605 El Campo Ave. Fort Worth, Texas 76107

817-569-8448

www.ClarityHomes.com

Elevations are artist's conception and room sizes are approximate, consult blueprints for specific detail. Square footages may vary. In order to facilitate continued improvement, Clarity Homes reserves the right of price, plan or specification changes without notice or obligation. Promotional materials in models or similar homes that have been viewed may have extra features, plan changes or improvements shown therein which may not be included unless specifically provided for the purchase agreement. Prices may vary between different elevations for the same floor plan. Prices subject to change without notice.