

CLARITY HOMES

clarityhomes.com

CROWN VALLEY ESTATES

4 BED | 3 BATH | FLEX ROOM |

GAME ROOM | 2 CAR

3,174 Sq. Ft.

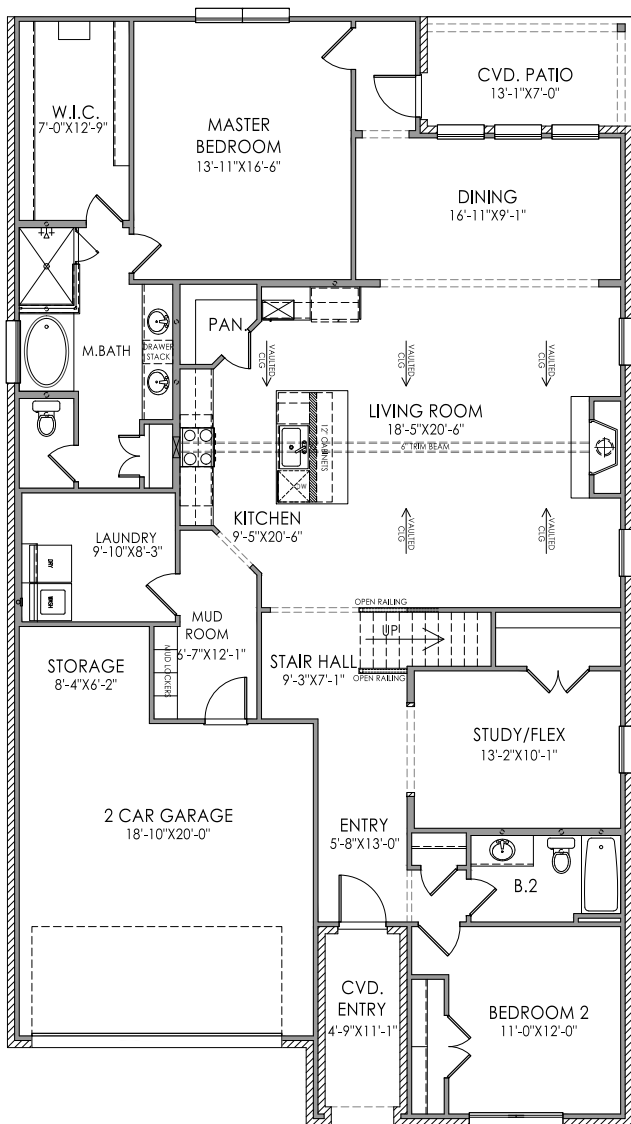
CONTACT: DAYNA THOMPSON

817-692-1445

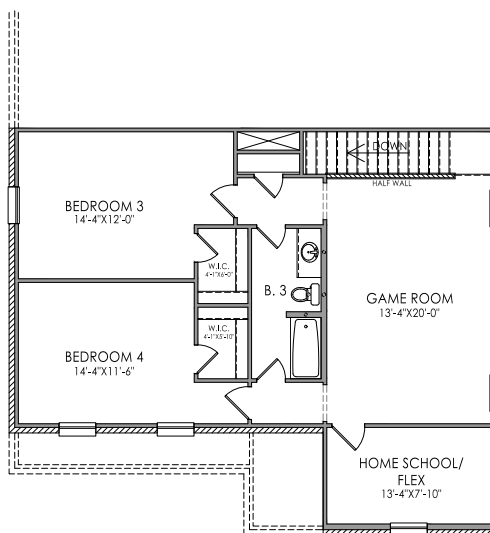
Dayna@ClarityHomes.com



1013 BROWN VALLEY
WEATHERFORD, TX 76087



- Beautiful Tudor coming to Crown Valley!
- Luxury vinyl wood style flooring in entry, living, kitchen, dining, mud room and bedroom 2
- New stainless kitchen appliances + gas range
- Chef's dream kitchen with an expansive eat-in island
- Signature brick arch at entry
- Stunning open railing along staircase
- Gas fireplace with cedar beam mantle & raised brick hearth
- Mud lockers in mud room
- Spacious master bathroom with soaker tub & separate shower
- Designer lighting and tile throughout
- Full landscaping package with irrigation and more!



CLARITY HOMES

3605 El Campo Ave. Fort Worth, Texas 76107

817-569-8448

www.ClarityHomes.com

Elevations are artist's conception and room sizes are approximate, consult blueprints for specific detail. Square footages may vary. In order to facilitate continued improvement, Clarity Homes reserves the right of price, plan or specification changes without notice or obligation. Promotional materials in models or similar homes that have been viewed may have extra features, plan changes or improvements shown therein which may not be included unless specifically provided for the purchase agreement. Prices may vary between different elevations for the same floor plan. Prices subject to change without notice.